

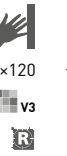
WAKV6790
 ○ 680 l m²
 matt
 weiß-grau | white-grey



WAKV6791
 ○ 680 l m²
 matt
 grau | grey



WAKV6792
 ○ 680 l m²
 matt
 schwarz | black

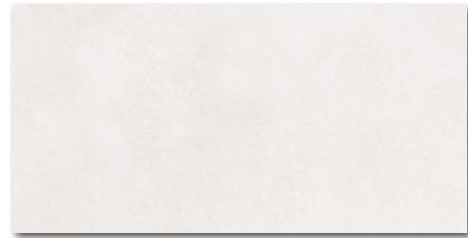


WAKV6793
 ○ 680 l m²
 matt
 hellbeige | light beige



WAKV6794
 ○ 680 l m²
 matt
 dunkelbeige | dark beige





WADV4790*
WADVK790**
480 l m²
matt | V3

weiß-grau | white-grey



WAKV4790*
WAKVK790**
500 l m²
matt | V3

weiß-grau | white-grey



WARV4790*
WARVK790**
480 l m²
matt | V3

weiß-grau | white-grey



WADV4793*
WADVK793**
480 l m²
matt | V3

hellbeige | light beige



WAKV4793*
WAKVK793**
500 l m²
matt | V3

hellbeige | light beige

WARV4793*
WARVK793**
480 l m²
matt | V3

hellbeige | light beige



WADV4791*
WADVK791**
480 l m²
matt | V3

grau | grey



WAKV4791*
WAKVK791**
500 l m²
matt | V3

grau | grey



WARV4791*
WARVK791**
480 l m²
matt | V3

grau | grey



WADV4794*
WADVK794**
480 l m²
matt | V3

dunkelbeige | dark beige



WAKV4794*
WAKVK794**
500 l m²
matt | V3

dunkelbeige | dark beige

WAKV4797*
WAKVK797**
500 l m²
matt | V4

mehrfarbig | multicoloured



WADV4792*
WADVK792**
480 l m²
matt | V3

schwarz | black



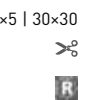
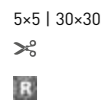
WAKV4792*
WAKVK792**
500 l m²
matt | V3

schwarz | black



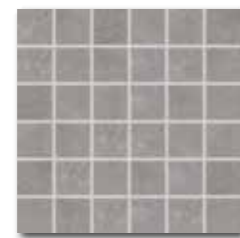
WAKV4796*
WAKVK796**
500 l m²
matt | V4

mehrfarbig | multicoloured



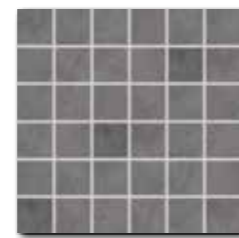
WDM05790** (SHEET)
320 l Netz
matt | V3

weiß-grau | white-grey



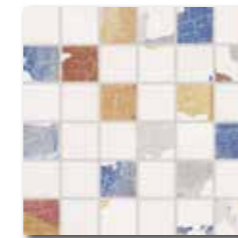
WDM05791** (SHEET)
320 l Netz
matt | V3

grau | grey



WDM05792** (SHEET)
320 l Netz
matt | V3

schwarz | black



WDM06796* WDM05796** (SHEET)
320 l Netz
matt | V4

mehrfarbig | multicoloured



WDM05793** (SHEET)
320 l Netz
matt | V3

hellbeige | light beige



WDM05794** (SHEET)
320 l Netz
matt | V3

dunkelbeige | dark beige



WDM06797* WDM05797** (SHEET)
320 l Netz
matt | V4

mehrfarbig | multicoloured

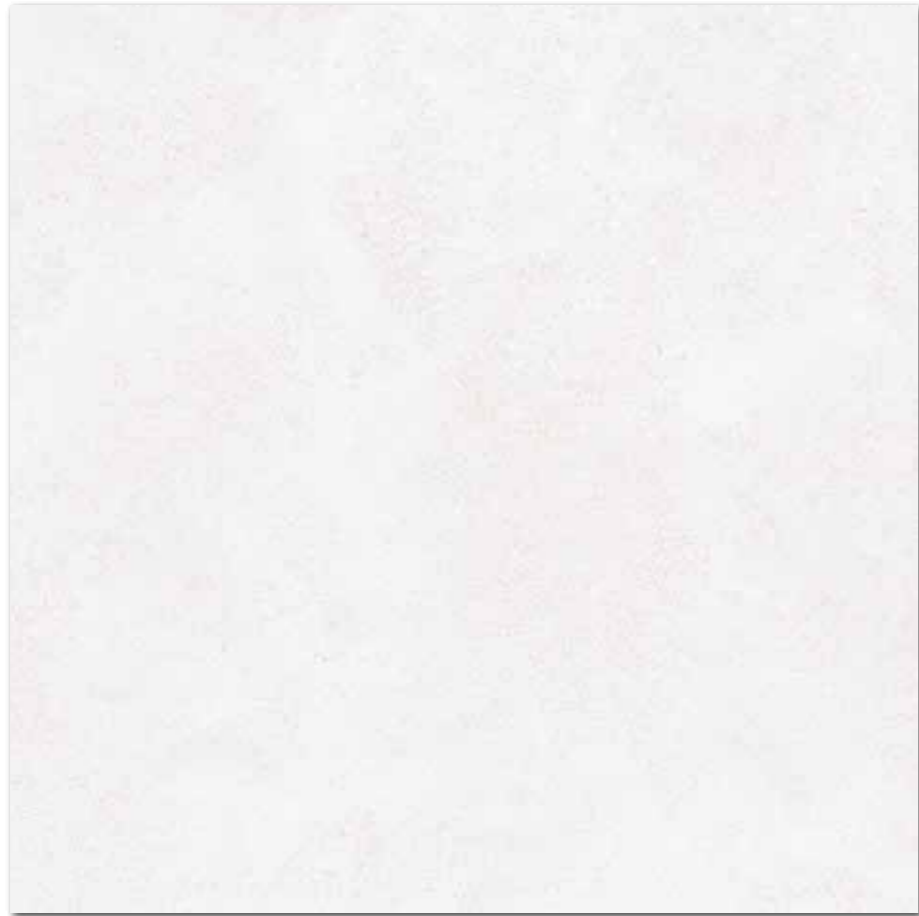
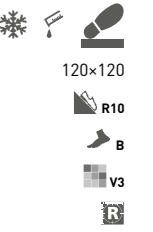
Produkt product	cm	mm	EN	Stk/m ²	m ²	kg	kg/m ²	brutto kg
Wandfliese wall tile*	30x60	298-598-10	EN 14411 - L BIII	6	5,56	1,08	40	43,20
Wandfliese wall tile**	30x60	298-598-8	EN 14411 - L BIII	8	5,56	1,44	40	57,60
Mosaik sheet 30x30 cm mosaic sheet 30x30 cm*	5x5	48-48-10	STO No. 030 - 059826	3	11	0,27	-	4,7
Mosaik sheet 30x30 cm mosaic sheet 30x30 cm** 5x5	5x5	48-48-8	STO No. 030 - 059826	4	11	0,36	-	5,2

* Verfügbar solange der Vorrat reicht | Available while stocks last

** Neues Produkt in 8mm Stärke ab 02/2023 erhältlich | New product in 8mm thickness available from 02/2023

Die Produktverpackung enthält zufällige Designmöglichkeiten. | The products are deliberately mixed in packing to include a random selection of designs.





DAK92790
 PEI 5 ○ 930 l m²
 matt
 weiß-grau | white-grey



DAK92793
 PEI 5 ○ 930 l m²
 matt
 hellbeige | light beige

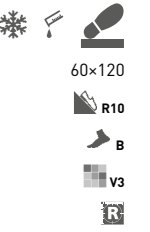
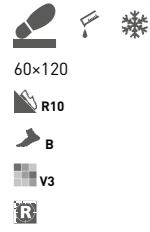


DAK92791
 PEI 4 ○ 930 l m²
 matt
 grau | grey



DAK92792
 PEI 4 ○ 930 l m²
 matt
 schwarz | black

Verfügbar ab 02/2023 | Available from 02/2023



DAKV1790
PEI 5 \odot 700 l m²
matt
weiß-grau | white-grey



DAKV1793
PEI 5 \odot 700 l m²
matt
hellbeige | light beige



DAKV1791
PEI 4 \odot 700 l m²
matt
grau | grey



DAKV1794
PEI 4 \odot 700 l m²
matt
dunkelbeige | dark beige



DAKV1792
PEI 4 \odot 700 l m²
matt
schwarz | black

Produkt product	cm	mm	EN		St/m ²	m ²		m ³	kg	kg/m ²	brutto kg
Bodenfliese floor tile	120x120	1198x1198x8,5	EN 14411 - G Bla	2	0,7	2,88	18	51,84	57,6	20,0	1 077
Bodenfliese floor tile	60x120	598x1198x10	EN 14411 - G Bla	2	1,4	1,44	27	38,88	32,7	22,7	908

ⓘ Fliesen mit 120 x 120 cm werden auf einer Holzpalette mit seitlicher Verlängerung (122 x 143 x 70 cm) mit Kunststoffbändern befestigt und in Plastikfolie eingewickelt - siehe Seite 425. | Floor tiles 120 x 120 cm are packed on a wooden pallet with sides (122 x 143 x 70 cm), fixed with plastic tapes and protected with plastic foil - see page 425.



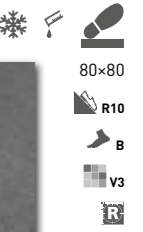
DAK81790
PEI 5 ○ 700 l m²
matt
weiß-grau | white-grey



DAK81791
PEI 4 ○ 700 l m²
matt
grau | grey



DAK81792
PEI 4 ○ 700 l m²
matt
schwarz | black



DAK81793
PEI 5 ○ 700 l m²
matt
hellbeige | light beige



DAK81794
PEI 4 ○ 700 l m²
matt
dunkelbeige | dark beige



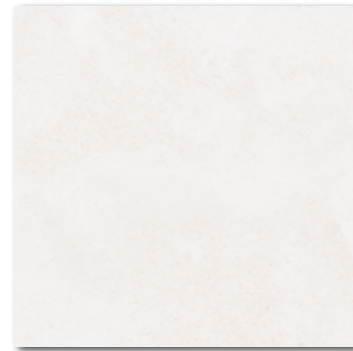
DAK63790
PEI 5 ○ 560 | m²
matt | R10 | B

DAF63790
PEI 5 ○ 640 | m²
matt | R11 | B **News**

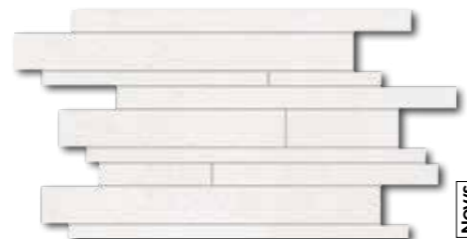


DAKSE790
PEI 5 ○ 540 | m²
matt | R10 | B

DAFSE790
PEI 5 ○ 620 | m²
matt | R11 | B **News**



DAA4H790
PEI 5 ○ 510 | m²
matt



DDVP4790
PEI 5 ○ 500 | Netz
matt

(SHEET) **News**

weiß-grau | white-grey



DAK63791
PEI 4 ○ 560 | m²
matt | R10 | B

DAF63791
PEI 4 ○ 640 | m²
matt | R11 | B **News**



DAKSE791
PEI 4 ○ 540 | m²
matt | R10 | B

DAFSE791
PEI 4 ○ 620 | m²
matt | R11 | B **News**



DAA4H791
PEI 4 ○ 510 | m²
matt



DDVP4791
PEI 4 ○ 500 | Netz
matt

(SHEET) **News**

grau | grey



DAK63792
PEI 4 ○ 560 | m²
matt | R10 | B

DAF63792
PEI 4 ○ 640 | m²
matt | R11 | B **News**

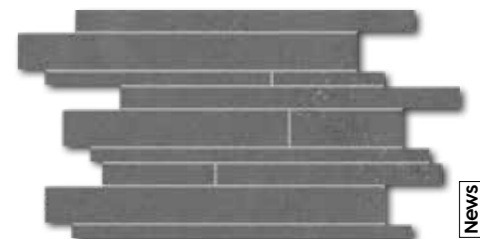


DAKSE792
PEI 4 ○ 540 | m²
matt | R10 | B

DAFSE792
PEI 4 ○ 620 | m²
matt | R11 | B **News**



DAA4H792
PEI 4 ○ 510 | m²
matt



DDVP4792
PEI 4 ○ 500 | Netz
matt

(SHEET) **News**

schwarz | black

60x60
v3
R

30x60
v3
R

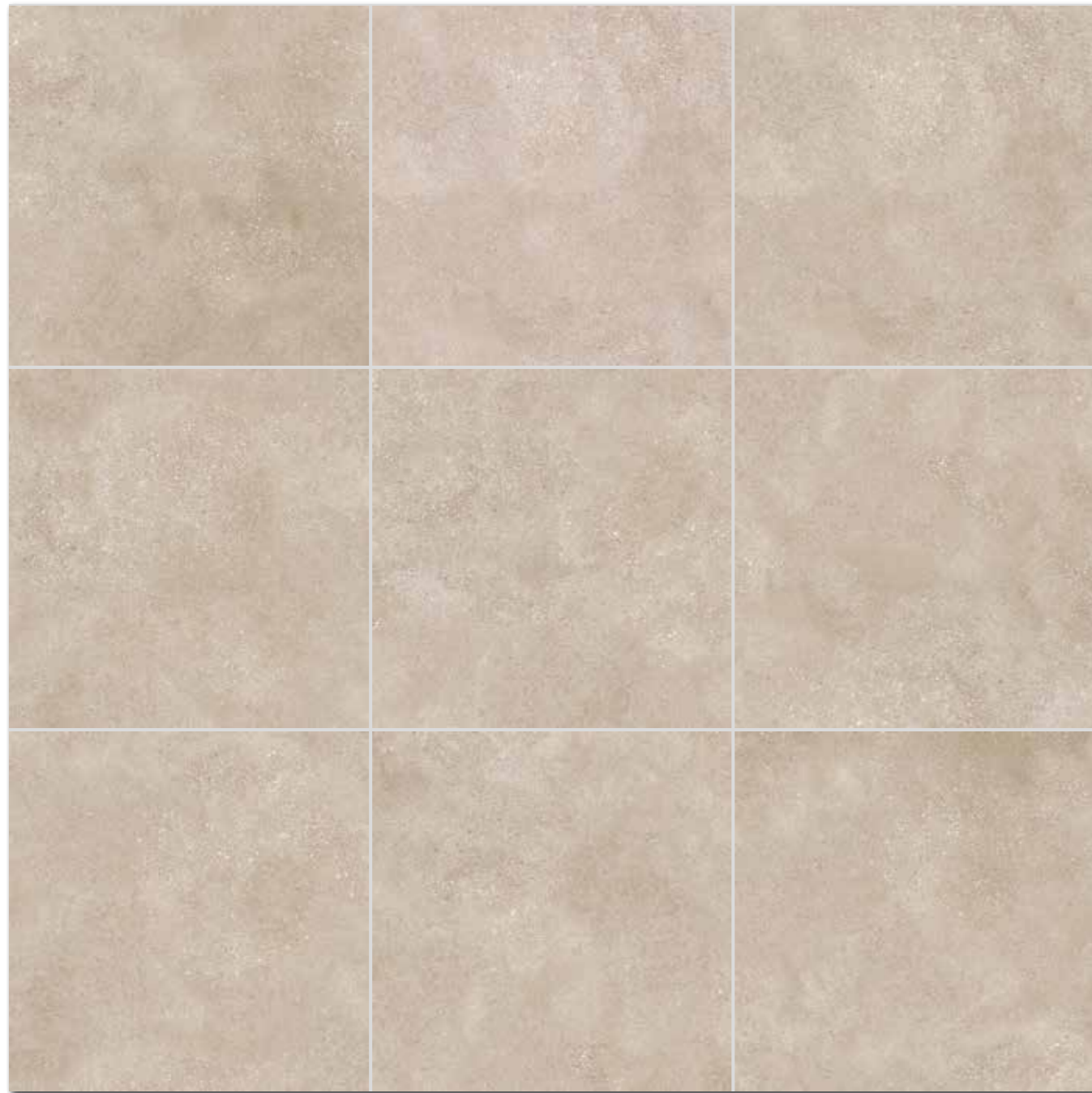
45x45
R10
B
v3

30x45
R10
B
v3
R

RAKO Home

Produkt product	cm	mm	EN	St/m ²	m ²	m ²	kg	kg/m ²	brutto kg	
Bodenfliese floor tile	60x60	598x598x10	EN 14411 - G Bla	3	2,8	1,08	32	34,56	23,7	782
Bodenfliese floor tile	30x60	298x598x10	EN 14411 - G Bla	6	5,6	1,08	40	43,20	23,7	971
Bodenfliese floor tile	45x45	448x448x8	EN 14411 - G Bla	6	5	1,21	34	41,14	21,1	741
Dekor (set) decor (sheet)	30x45	298x445x8	EN 14411 - G Bla	5	7,4	0,68	36	-	11,5	-

Empfohlene Formatkombinationen siehe Seite 428. | Recommended combinations of modular sizes see page 428.



Die Fliesen der Serie zeichnen sich durch ein breites Farbspiel V3 | V4 aus. | All products of the entire batch show big deviations in shade difference V3 | V4.

Wir empfehlen, einzelne Fliesen aus mehreren Paketen herauszunehmen und den gesamten Bodenbelag nach der Inspirationsfotodokumentation in den Katalogen RAKO, eventuell den Webseiten www.rako.eu, zu komponieren. Wünschenswert ist die Kombination aller Fliesendesigns einschließlich ihrer Drehung um 90° oder 180°, sodass ausgewogene Optik der verlegten Fläche erzielt wird.

Before laying the tiles, we suggest you select from several cartons and arrange them as illustrated in the inspiration photo documentation in RAKO catalogues or website www.rako.eu, and mix the tiles to achieve the required result including turning them by 90° or 180°.



DAK63793
PEI 5 \odot 560 | m²
matt | **R10** | **B**

DAF63793
PEI 5 \odot 640 | m²
matt | **R11** | **B** **News**



DAK63794
PEI 4 \odot 560 | m²
matt | **R10** | **B**

DAF63794
PEI 4 \odot 640 | m²
matt | **R11** | **B** **News**



DAKSE793
PEI 5 \odot 540 | m²
matt | **R10** | **B**

DAFSE793
PEI 5 \odot 620 | m²
matt | **R11** | **B** **News**



DAKSE794
PEI 4 \odot 540 | m²
matt | **R10** | **B**

DAFSE794
PEI 4 \odot 620 | m²
matt | **R11** | **B** **News**



DAA4H793
PEI 5 \odot 510 | m²
matt



DAA4H794
PEI 4 \odot 510 | m²
matt



DDVP4793
PEI 5 \odot 500 | Netz
matt

hellbeige | light beige

(SHEET) **News**



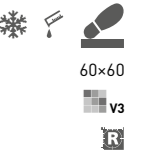
DDVP4794
PEI 4 \odot 500 | Netz
matt

dunkelbeige | dark beige

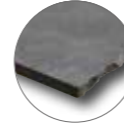
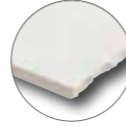
(SHEET) **News**

Produkt product	cm	mm	EN	Stk/m ²	m ²	m ²	m ²	kg	kg/m ²	brutto kg	
Bodenfliese floor tile	60x60	598x598x10	EN 14411 - G Bla	3	2,8	1,08	32	34,56	23,7	21,9	782
Bodenfliese floor tile	30x60	298x598x10	EN 14411 - G Bla	6	5,6	1,08	40	43,20	23,7	21,9	971
Bodenfliese floor tile	45x45	448x448x8	EN 14411 - G Bla	6	5	1,21	34	41,14	21,1	17,4	741
Dekor (set) decor (sheet)	30x45	298x445x8	EN 14411 - G Bla	5	7,4	0,68	36	-	11,5	17,4	-

Empfohlene Formatkombinationen siehe Seite 428. | Recommended combinations of modular sizes see page 428.



RAKO Home



DAK63795
PEI 5 \odot 560 | m²
matt | **V4**

weiß-grau | white-grey



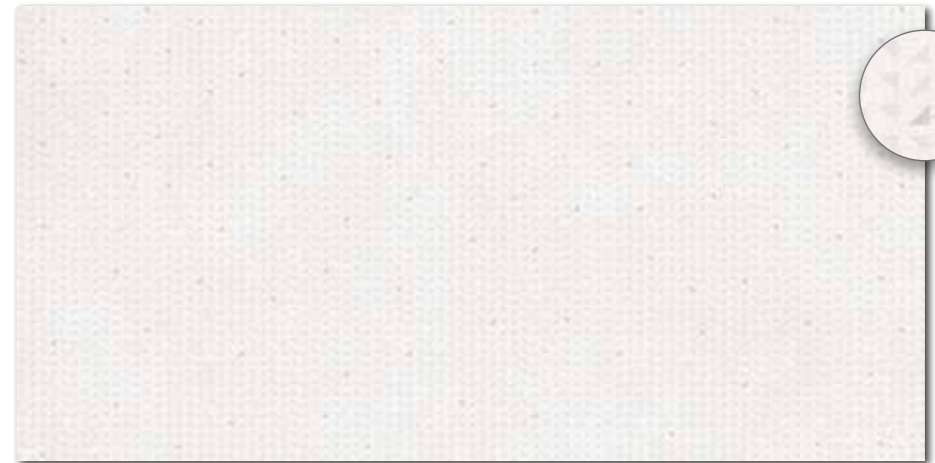
DAK63796
PEI 4 \odot 560 | m²
matt | **V4**

grau | grey



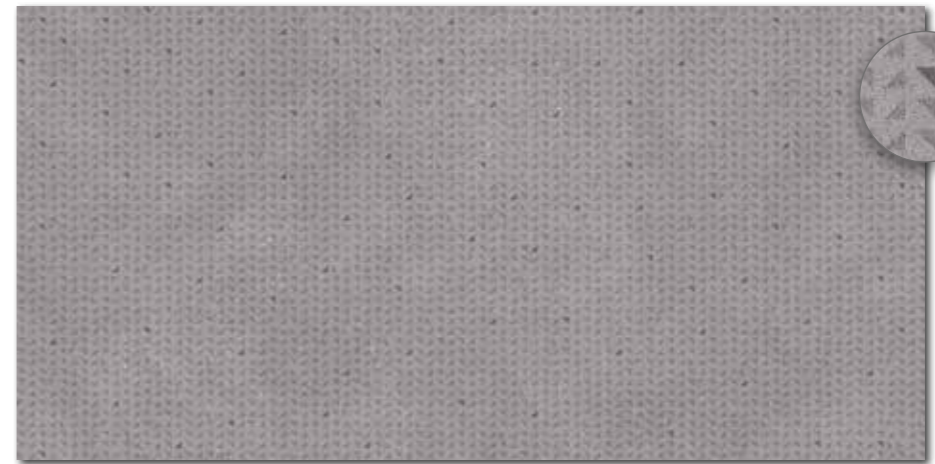
DAK63797
PEI 5 \odot 560 | m²
matt | **V4**

beige | beige



DAKV1795
PEI 5 \odot 700 | m²
matt | **V3**

weiß-grau | white-grey



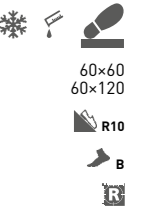
DAKV1796
PEI 4 \odot 700 | m²
matt | **V3**

grau | grey



DAKV1797
PEI 5 \odot 700 | m²
matt | **V3**

beige | beige



60x60
60x120

R10

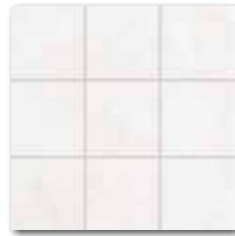
B

R

Produkt | product



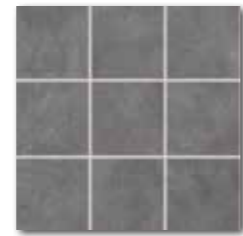
Produkt product	cm	mm	EN	Box	Stm ²	m ²	Box	m ²	kg	kg/m ²	brutto kg
Bodenfliese floor tile	60x60	598x598x10	EN 14411 - G Bla	3	2,8	1,08	32	34,56	23,7	21,9	782
Bodenfliese floor tile	60x120	598x1198x10	EN 14411 - G Bla	2	1,4	1,44	27	38,88	32,7	22,7	908



DAK12790 (SHEET)
PEI 5 \odot 970 | m²
matt
weiß-grau | white-grey



DAK12791 (SHEET)
PEI 4 \odot 970 | m²
matt
grau | grey



DAK12792 (SHEET)
PEI 4 \odot 970 | m²
matt
schwarz | black



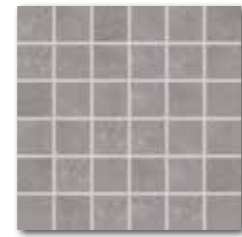
DAK12793 (SHEET)
PEI 5 \odot 970 | m²
matt
hellbeige | light beige



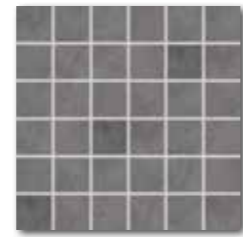
DAK12794 (SHEET)
PEI 4 \odot 970 | m²
matt
dunkelbeige | dark beige



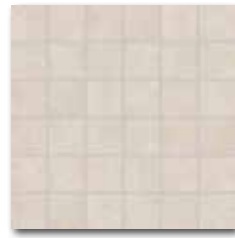
DDM06790 (SHEET)
PEI 5 \odot 440 | Netz
matt
weiß-grau | white-grey



DDM06791 (SHEET)
PEI 4 \odot 440 | Netz
matt
grau | grey



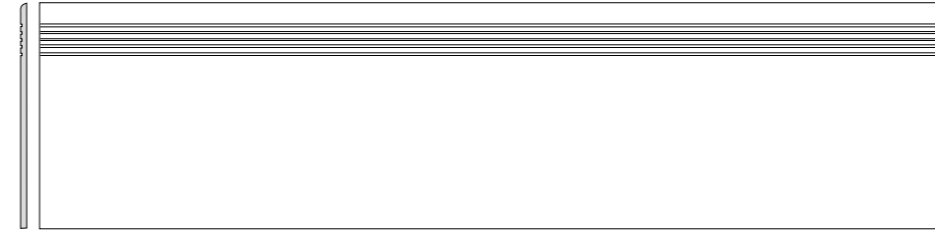
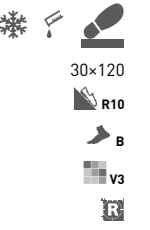
DDM06792 (SHEET)
PEI 4 \odot 440 | Netz
matt
schwarz | black



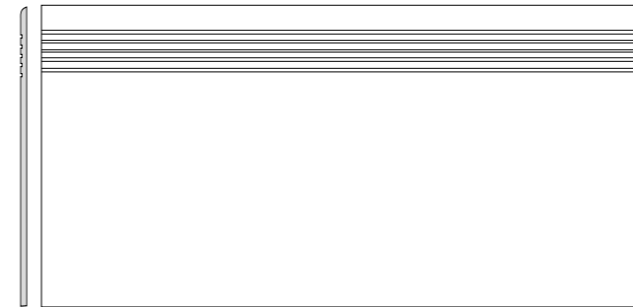
DDM06793 (SHEET)
PEI 5 \odot 440 | Netz
matt
hellbeige | light beige



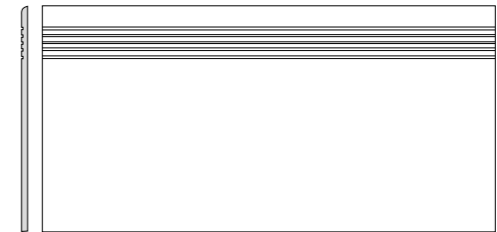
DDM06794 (SHEET)
PEI 4 \odot 440 | Netz
matt
dunkelbeige | dark beige



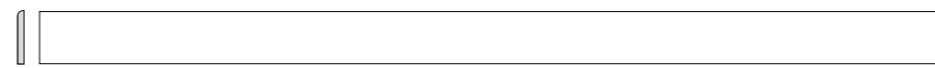
DCPVF790 weiß-grau | white-grey
DCPVF791 grau | grey
DCPVF792 schwarz | black
DCPVF793 hellbeige | light beige
DCPVF794 dunkelbeige | dark beige
PEI 4-5 \odot 840 | St
matt



DCP84790 weiß-grau | white-grey
DCP84791 grau | grey
DCP84792 schwarz | black
DCP84793 hellbeige | light beige
DCP84794 dunkelbeige | dark beige
PEI 4-5 \odot 490 | St
matt



DCPSE790 weiß-grau | white-grey
DCPSE791 grau | grey
DCPSE792 schwarz | black
DCPSE793 hellbeige | light beige
DCPSE794 dunkelbeige | dark beige
PEI 4-5 \odot 370 | St
matt



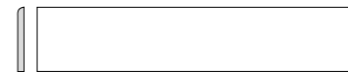
DSA97790 weiß-grau | white-grey
DSA97791 grau | grey
DSA97792 schwarz | black
DSA97793 hellbeige | light beige
DSA97794 dunkelbeige | dark beige
 \odot 460 | St
matt |



DSA89790 weiß-grau | white-grey
DSA89791 grau | grey
DSA89792 schwarz | black
DSA89793 hellbeige | light beige
DSA89794 dunkelbeige | dark beige
 \odot 290 | St
matt |



DSAS4790 weiß-grau | white-grey
DSAS4791 grau | grey
DSAS4792 schwarz | black
DSAS4793 hellbeige | light beige
DSAS4794 dunkelbeige | dark beige
 \odot 220 | St
matt |



DSAPS790 weiß-grau | white-grey
DSAPS791 grau | grey
DSAPS792 schwarz | black
DSAPS793 hellbeige | light beige
DSAPS794 dunkelbeige | dark beige
 \odot 200 | St
matt



Produkt product	cm	mm	EN	St/m ²	m ²	m ³	kg	kg/m ²	brutto kg		
Bodenfliese floor tile	10x10	98x98x10	EN 14411 - G Bla	10	11	0,91	56	50,96	19,9	21,9	1 142
Mosaik sheet 30x30 cm mosaic sheet 30x30 cm	5x5	48x48x10	EN 14411 - G Bla	3	11	0,27	-	-	5,9	21,9	-
Stufe step tile	30x120	298x1198x10	STO No. 030 - 059824	5	2,8	1,80	-	-	40,9	22,7	-
Stufe step tile	40x80	398x798x10	STO No. 030 - 059824	2	3,1	0,64	-	-	14,1	21,9	-
Stufe step tile	30x60	298x598x10	STO No. 030 - 059824	6	5,6	1,08	40	-	23,7	21,9	-
Sockel skirting plinth	120x7	1198x70x10	STO No. 030 - 059824	10	11,9	0,84	-	-	19,1	22,7	-
Sockel skirting plinth	80x9,5	798x95x10	STO No. 030 - 059824	10	13,2	0,76	-	-	16,7	21,9	-
Sockel skirting plinth	60x9,5	598x95x10	STO No. 030 - 059824	13	17,5	0,74	-	-	16,2	21,9	-
Sockel skirting plinth	45x8,5	448x85x8	STO No. 030 - 059824	25	26,1	0,96	-	-	16,7	17,4	-