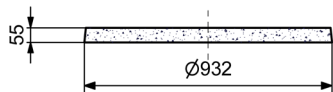


# BUSE DE PUIITS PLEINE A EMB.

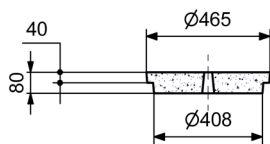
## Ø Int. 0,80 m



**COUVERCLE PLEIN  
BUSE DE PUIITS Ø 0,80 m**

Code Article : 461016

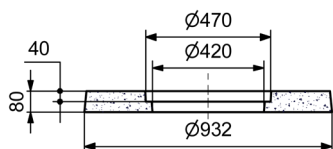
Poids : 90 Kg



**COUVERCLE  
BUSE DE PUIITS Ø 0,80 m  
AVEC TAMPON RENFORCES**

Code Article : 461020

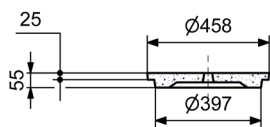
Poids : 133,5 Kg



**COUVERCLE  
BUSE DE PUIITS Ø 0,80 m  
AVEC TAMPON**

Code Article : 461010

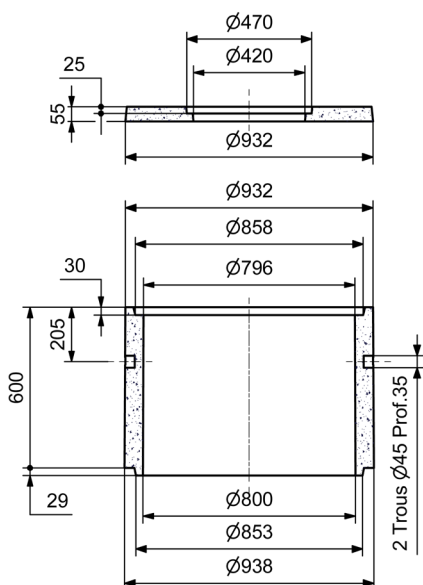
Poids : 83,6 Kg



**BUSE DE PUIITS A EMBOITEMENTS  
Ø Int. 0,80 m Ht. 0,60 m  
PLEINE**

Code Article : 460110

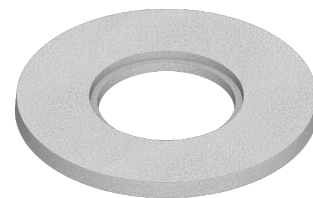
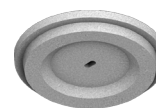
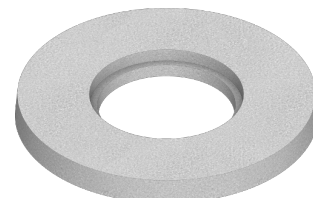
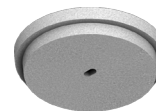
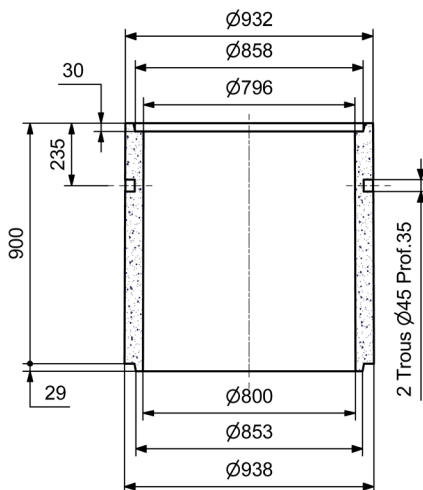
Poids : 269,2 Kg



**BUSE DE PUIITS A EMBOITEMENTS  
Ø Int. 0,80 m Ht. 0,90 m  
PLEINE**

Code Article : 460120

Poids : 400 Kg



**POSE EXCLUSIVE  
EN SOL**

**SAS R. THEBAULT**

Siège social et usine :

8, rue des Glénan - ZI de Saint-Eloi - 29800 PLOUEDERN

Tel. 02 98 21 63 63 - Fax : 02 98 21 34 11

Usines à : Mauron (56430) et Verneuil S/Avre (27130)



Version du 30/08/2017